

Barton Family Project

TENNIS COURT CONSTRUCTION

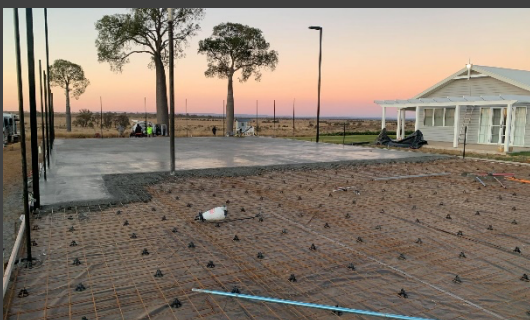


PREMIER
SPORTS & LEISURE
#1 In Sports Surfacing



CLIENT: Barton Family
COMPLETED: August 2021
SURFACE: Acrylic Hard Court

One of the projects we got to complete this year, as on a family's cattle farm out in Comet, near Emerald.



Our clients had just completed building their brand-new house; however, it was missing something, which turned out to be a new multipurpose court.

Premier Sports and Leisure team completed the required earthworks, so a concrete slab could be put down. The team then surfaced with Laykold Medium Green and marked white lines onto the court.



To showcase the amazing work that was completed, and so the kids can play until all times of the night, we installed 4 x 500-watt LED sharp cut off lights which were incorporated into the fence.

From start to finish this job was an amazing experience, and the kids can't get enough time in the day to play on it.

TESTIMONIAL –

“The court is fantastic; the kids are on it all day and night! Thank you again for doing the job for us, you have a great product and a great team. It has been a pleasure working with you.”